

VI-TURRET MOUNTINGS

Description:

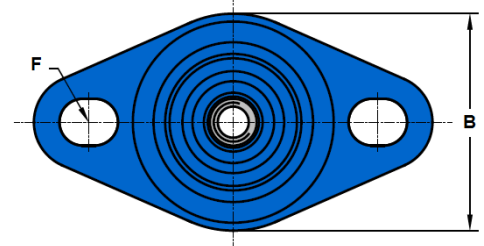
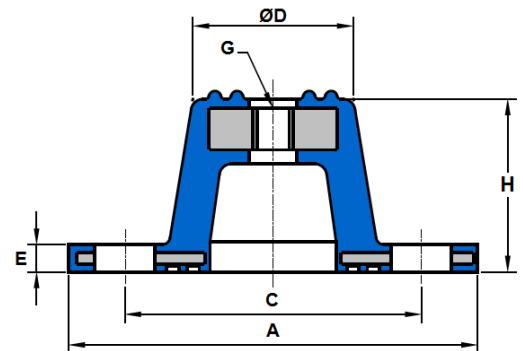
Vibracoustics Ltd Vi-Turret Mountings are designed principally for the mounting of HVAC systems, with relatively high levels of deflection ideal for the effective attenuation of noise and vibration from rotating equipment with speeds of 1000rpm (16Hz) and above.

Efficient construction with fully rubber encapsulated metal components for environmental protection, threaded top and stable base fixings with non-skid mounting faces.

Available in a range of sizes and rubber hardness for load capacities 35Kg to 500Kg. Other non-standard sizes available, contact Vibracoustics Ltd technical department for more information.

Typical Applications Include:

- Fans.
- Pumps.
- HVAC.
- Generators.
- Electric motors.
- Compressors.
- General equipment.



Part No.	Dimensions (mm)								Max Load (Kg)	Max Static Deflection (mm)
	H	A	B	C	D	G	F	E		
VS42000 YELLOW	32	80	45	57	41	M8	9x12	5	35	8
VS42000 BLUE	32	80	45	57	41	M8	9x12	5	65	8
VS42000 RED	32	80	45	57	41	M8	9x12	5	100	8
VS42001 YELLOW	45	95	60	71	56	M10	9x14	5	130	10
VS42001 BLUE	45	95	60	71	56	M10	9x14	5	225	10
VS42001 RED	45	95	60	71	56	M10	9x14	5	350	10
VS42002 YELLOW	70	150	86	115	82	M12	11x22	6	185	10
VS42002 BLUE	70	150	86	115	82	M12	11x22	6	320	10
VS42002 RED	70	150	86	115	82	M12	11x22	6	500	10

